

# Type **TN1 H<sub>2</sub> 70 MPa**

## WEH<sup>®</sup> Receptacle

for refueling of light-duty vehicles (cars) with hydrogen



**General**

**DESCRIPTION**



**Features**

- Low-noise refueling
- Integrated self-cleaning particle filter (20 micron)
- Integrated high-flow check valve
- Sealing-friendly design
- Coding for pressure range / gas type

The WEH<sup>®</sup> TN1 H<sub>2</sub> 70 MPa Receptacle is designed specifically for hydrogen refueling of cars with a pressure range of 70 MPa. Due to the internal aerodynamic design the receptacle gives low noise (no high frequency whistle) combined with maximum flow rate and fast filling. The receptacle is a very durable unit, minimizing maintenance and down-time. The WEH<sup>®</sup> TN1 H<sub>2</sub> 70 MPa Receptacle has an integrated check valve system which is designed to minimize the effect that dirt particles have on the sealing components within the receptacle. The TN1 H<sub>2</sub> 70 MPa is also equipped with a coding for pressure range and gas type.

**Enhanced safety by integrating a particle filter**

Using an integrated particle filter avoids dirt ingress and therefore leakage from the receptacle which gives enhanced safety.

**Application**

Receptacle for refueling of light-duty vehicles (cars) with hydrogen.

		NOZZLE - pressure range/coding			
		3,600 psi	5,000 psi	5,000 psi HF*	10,000 psi
RECEPTACLE - pressure range/coding	3,600 psi	✓			
	5,000 psi	✓	✓		
	5,000 psi HF	✓	✓	✓	
	10,000 psi	✓	✓		✓

\* HF = High-Flow

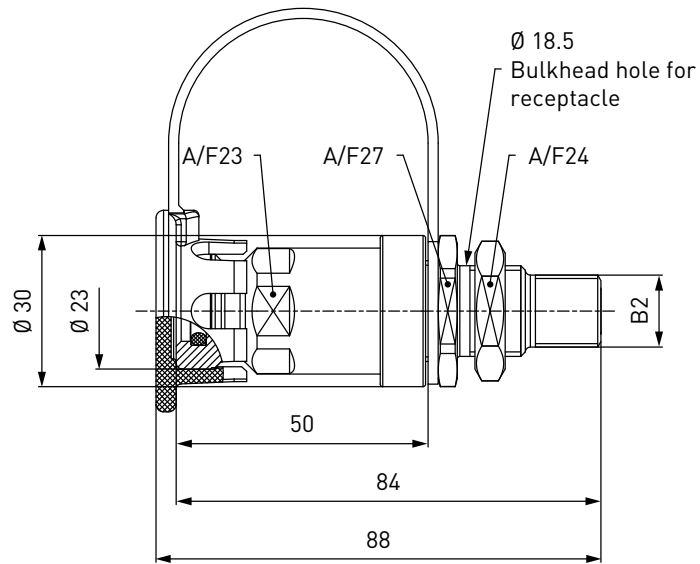
**TECHNICAL DATA**

Characteristic	Basic version	Options
Nominal bore DN	3 mm	On request
Pressure range	PN = 700 bar (10,000 psi)   PS = 875 bar   PT = 1255 bar	
Temperature range	-40 °F up to +185 °F	On request
Material	Corrosion resistant	On request
Sealing material	Hydrogen compatible	On request
Design	With protection cap, with integrated particle filter (20 micron) and integrated check valve	On request
Registration	e1 00 0010 (Regulation (EC) No. 79/2009) SAE J2600:2002 SAE TIR J2799	

**Ordering**

**ORDERING** | WEH® TN1 H<sub>2</sub> 70 MPa Receptacle with male thread

approx. dimensions (mm)

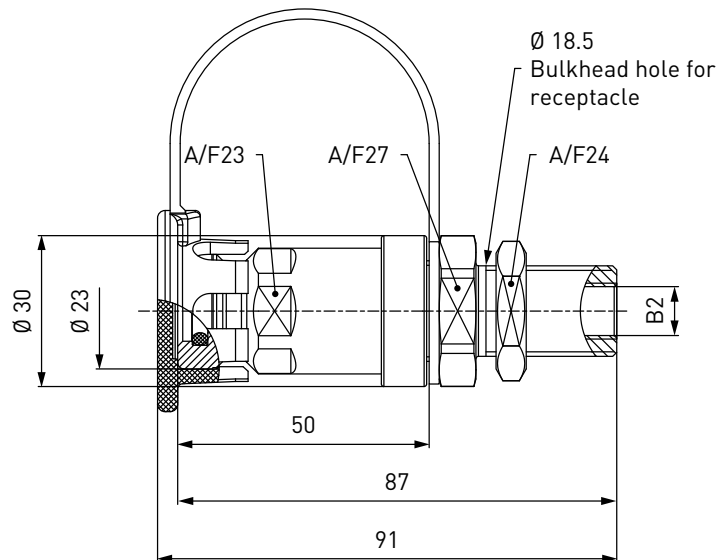


Part No.	Description	DN	Pressure (PN)	Port B2 (male thread)
<b>C1-84087</b>	TN1 H <sub>2</sub> 70 MPa (e1)	3	700 bar / 10,000 psi	UNF 9/16" -18 for sealing with O-Lok® Face Seal* for tube Ø 6 (1/4")

\* Face Seal acc. to SAE J1453

**ORDERING** | WEH® TN1 H<sub>2</sub> 70 MPa Receptacle with female thread (autoclave)

approx. dimensions (mm)



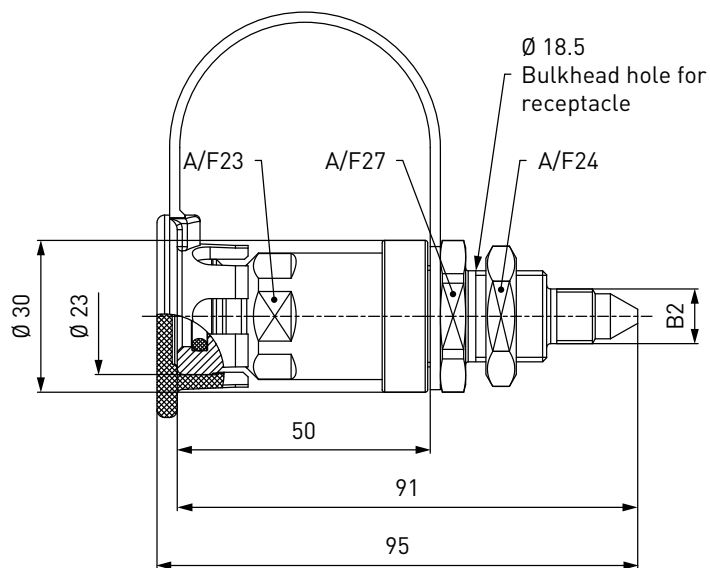
Part No.	Description	DN	Pressure (PN)	Port B2 (female thread)
<b>C1-87745</b>	TN1 H <sub>2</sub> 70 MPa (e1)	3	700 bar / 10,000 psi	UNF 7/16" -20*

\* 60° cone, MP-fitting

**Ordering**

**ORDERING** | WEH® TN1 H<sub>2</sub> 70 MPa Receptacle with male thread (autoclave)

approx. dimensions (mm)



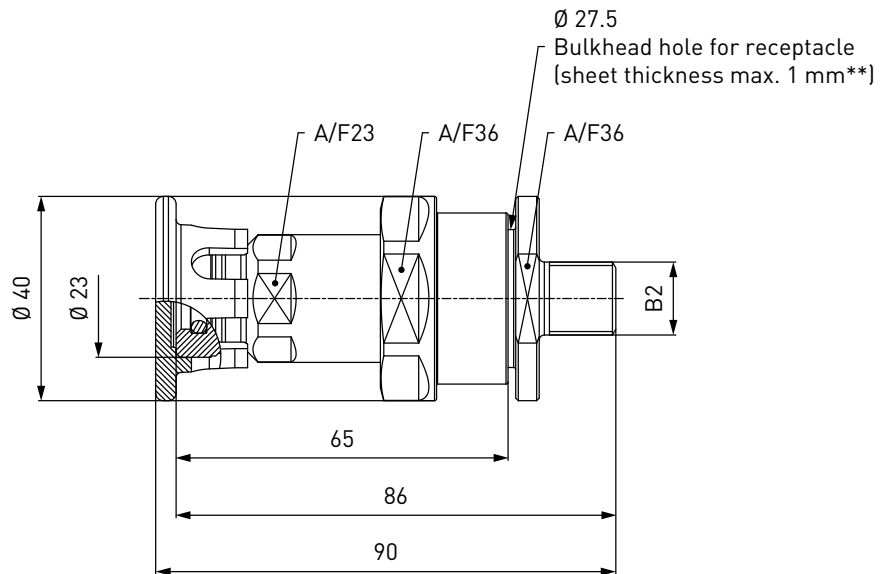
Part No.	Description	DN	Pressure (PN)	Port B2 (male thread)
<b>C1-88565</b>	TN1 H <sub>2</sub> 70 MPa (e1)	3	700 bar / 10,000 psi	UNF 7/16"-20*

\* 60° outer cone

**Ordering / Spare parts**

**ORDERING** | WEH® TN1 H<sub>2</sub> 70 MPa Receptacle with male thread, prepared for data interface

approx. dimensions (mm)



Part No.	Description	DN	Pressure (PN)	Port B2 (male thread)
<b>C1-84883</b>	TN1 H <sub>2</sub> 70 MPa (e1)	3	700 bar / 10,000 psi	UNF 9/16"-18 for sealing with O-Lok® Face Seal* for tube Ø 6 (1/4")

\* Face Seal acc. to SAE J1453

\*\* Please indicate when ordering if thicker sheet metals are needed!  
Data interface not included!

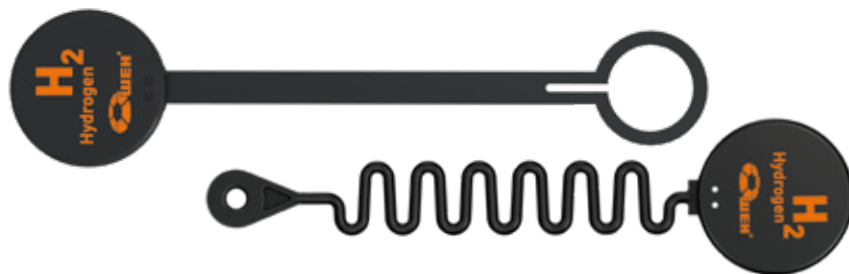
Other connection sizes and versions on request.

**SPARE PARTS**

Various parts are available as spares for the WEH® TN1 H<sub>2</sub> 70 MPa Receptacle:

**Protection cap**

Protection cap with a strap to protect the TN1 H<sub>2</sub> 70 MPa receptacle from dirt ingress.



Part No.	Description
<b>C1-87803</b>	Protection cap
<b>C1-85984</b>	Protection cap for receptacles prepared for data interface

## Other products

### OTHER PRODUCTS

You will find more products in our current catalog no. 50



Further information on our homepage  
[www.weh.com](http://www.weh.com)

#### Abbreviations/Definition

Explanation of abbreviations see technical appendix in the catalogue or [www.weh.com](http://www.weh.com)

#### Safe product selection

Our WEH® Products are designed to be operated by qualified professional users (insofar as WEH® Products are also designed to be operated by other users in individual cases, this is explicitly stated in the corresponding operating instructions). You alone are responsible for the selection of WEH® Products and their configuration according to the requirements of your system. In doing so, please particularly consider your intended use, your performance data, your material compatibility, your system concept and your system limits as well as your technical and legal requirements for operation, handling and maintenance. The quality and safety of WEH® Products is our highest priority. For this reason, WEH® Products may not be used outside the specifications in the relevant data sheets and product descriptions. We also strongly recommend that you refrain from using third-party spare parts or a combination of WEH® Products with unsuitable third-party products. You alone are responsible for reviewing the suitability of third-party products. WEH® Products and WEH® Spare parts comply with our quality and safety standards.

#### Explanation on the Pressure Equipment Directive

These WEH® Products are generally and exclusively classified as pressure accessories for piping in accordance with Article 2 (5) of the Pressure Equipment Directive 2014/68/EU. These WEH® Products may not be used (i) as safety accessories or (ii) for vessels as defined by the Pressure Equipment Directive 2014/68/EU. Therefore, the application of these WEH® Products must comply with their classification as pressure accessories for piping. The assessment with regard to a different classification can, however, be made on request.

#### External change management

WEH reserves the right to update, optimise and adjust its products continuously. This may result in corresponding changes of the product. Customers will be informed proactively or unsolicited by WEH only in individual cases about product updates, product optimisations and/or product adaptations that have been carried out. You are free to contact WEH at any time to request information about any product updates, product optimisations and/or product adjustments.

© All rights reserved, WEH GmbH. Any unauthorized use is strictly forbidden. Subject to alteration.  
 No liability will be assumed for any content. Herewith previous versions are no longer valid.

### » Contacting

For queries and further information, please do not hesitate to contact us.

Manufacturer:

**WEH GmbH Gas Technology**

Josef-Henle-Str. 1  
 89257 Illertissen / Germany

Phone: +49 7303 95190-0  
 Fax: +49 7303 95190-9999

Email: [h2sales@weh.com](mailto:h2sales@weh.com)  
[www.weh.com](http://www.weh.com)



Distributor US:

**WEH Technologies Inc.**

24903 Laguna Edge Drive  
 Katy, TX 77494 / USA

Phone: +1 832 331 0021  
 Fax: +1 281 712 2664

Email: [sales@weh.us](mailto:sales@weh.us)  
[www.weh.us](http://www.weh.us)